

**Next-Generation Platform for Heidelberg Engineering
Device Management and Integration**



HEIDELBERG
EYE EXPLORER
HEYEX 2

HEIDELBERG
ENGINEERING

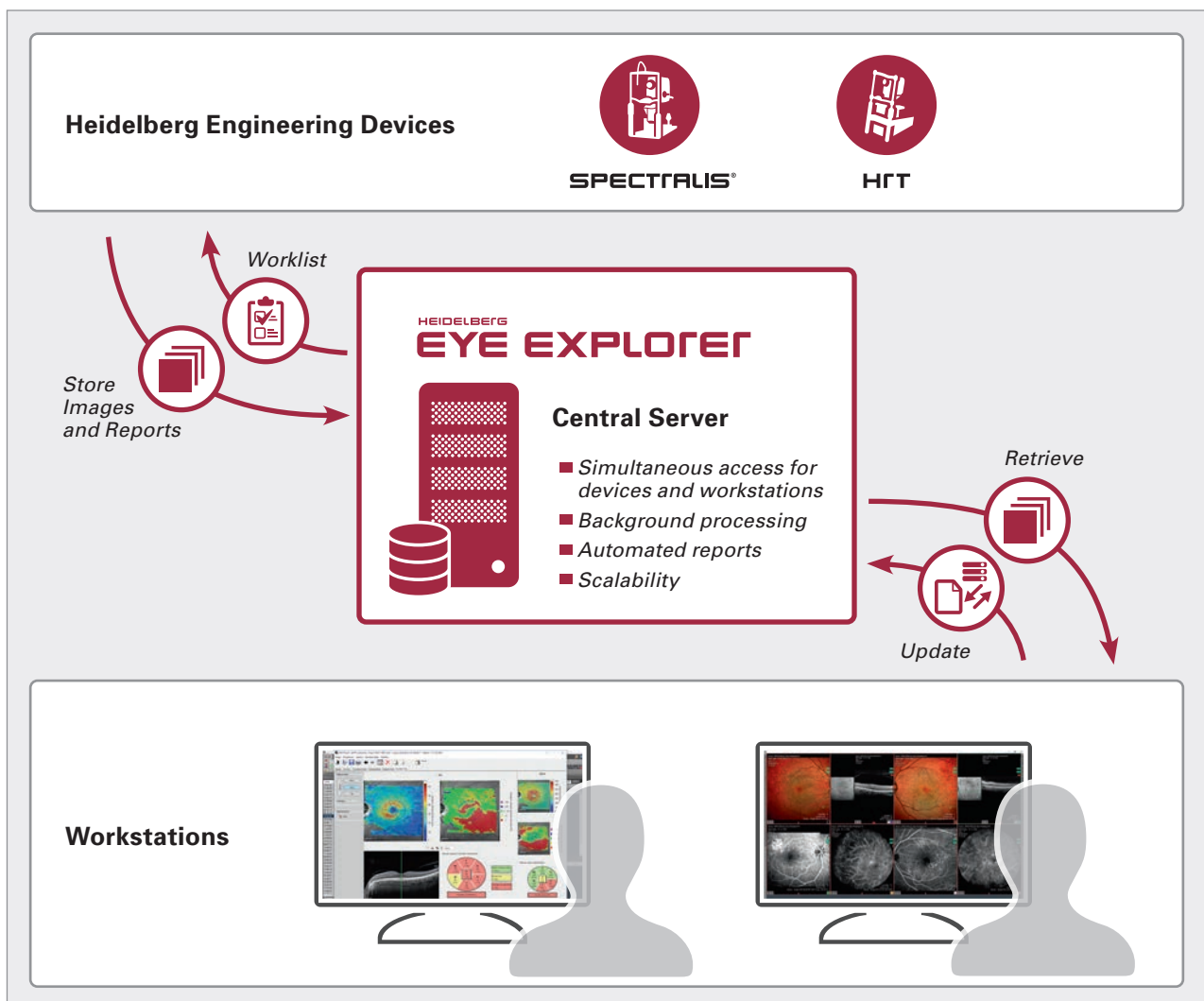
Performance you can see for yourself. Upgrade to HEIDELBERG EYE EXPLORER HEYEX 2

As the newest addition to the HEIDELBERG EYE EXPLORER family of healthcare IT solutions, HEYEX 2 empowers you to improve patient care by giving you fast and simple access to diagnostic images, reports, and maps from **all** your Heidelberg Engineering devices on a single platform.

HEYEX 2, the image management software module of HEIDELBERG EYE EXPLORER, connects and operates all Heidelberg Engineering products, and scales from a small practice with just a single device to a large enterprise with numerous Heidelberg instruments and multiple sites.

HEIDELBERG EYE EXPLORER streamlines and simplifies your workflow, enhances your security, and future-proofs your practice.

HEYEX 2 Workflow



Efficiency Transforms Your Workflow

HEYEX 2 offers fast retrieval of large image files and simultaneous access to the same patient record, examination and image by more than one user. Transform your clinical workflow by saving and processing images in the background, rather than between exams, allowing for rapid acquisition and review of data. By giving you convenient and comprehensive access to the multimodal diagnostic information of all your Heidelberg Engineering devices, HEYEX 2 supports fast, accurate assessment and leaves you more time to consult with your patients.

The **enhanced search facility** employs both global and user-specific filters for you to drill down to the right patient data within seconds. To eliminate the need for duplicate data entry, you have the option of using **Remote Control** to call HEYEX 2 directly from your EMR (Electronic Medical Records).

Sex	Last name	First name	Date of birth	ID	Most rec...
F	Miller	Sophie	01.01.2001	1234	30.01.2019

Date	Time	Includes...	Description	Accession No.
30.01.2019	09:27:38	DOC IOP...	External Patient: OCT	
30.01.2019	09:21:35	DOC IOP...	External Patient: OCT	
30.01.2019	09:07:12	DOC IOP...	External Patient: OCT	
21.08.2015	11:20:25	DOC IOP...	External Patient: External Patient: HRA + OCT	

HEYEX 2 enhanced search facility

Modality worklists can be entered and assigned to a Heidelberg Engineering device or specific operators to increase efficiency. The order/exam structure of HEYEX 2 allows you to request scan protocols on multiple devices specific for a pathology, device, or consultant.

Name	ID	Date of birth	Sex	Includes modality	Date	Time	Description	Requesting phy...
Johnson^Lydia	3649	01.01.1953	F	OP	12.08.2019	10:35:12	Glaucoma	Dr .FL COSCAS
Miller^Sophie	1234	01.01.2001	F	OP	12.08.2019	10:27:13	Retina	Dr .FL COSCAS
Winter^Joe	5678	12.05.1980	F	OP	12.08.2019	10:32:10	Retina + Glaucoma	Dr .FL COSCAS

Operator: Photo, Photo
Choose a device: Heidelberg Retina Angiograph - CSEITH

Select examinations from modality worklists

Easy Access to Clinical Tools Saves Time



Familiar clinical features reduce training time for those who have worked with the first-generation Heidelberg Eye Explorer. HEYEX 2 is a feature-rich clinical tool that delivers a comprehensive overview of multiple exams for efficient analysis.

The **convenient DICOM Modality Viewer** makes it possible to pull together information from all Heidelberg Engineering devices, modalities, symmetry comparisons, and multiple visits quickly with the user-friendly drag-and-drop feature. **Automated report generation** and the ability to save preferred report formats saves you time.

With HEYEX 2 you get instant access to future updates and upgrades by **central software distribution** to all acquisition and viewing stations across your network.

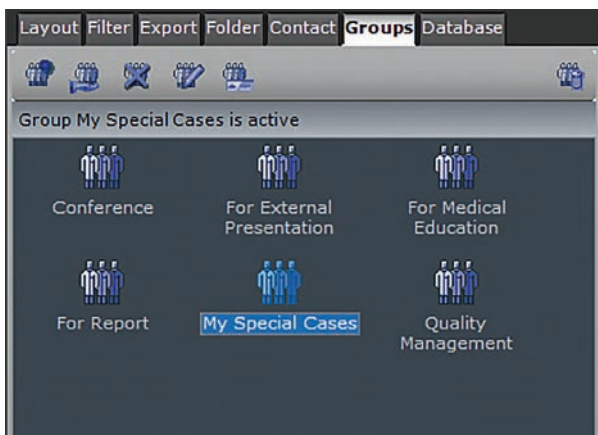
Sharing Made Simple and Secure

Every workstation provides access to the clinical tools available at the acquisition station, while the workstation also offers instant access to images and patient data. This flexibility sets HEYEX 2 apart.

The **drag-and-drop export** facilitates sharing complete data sets with colleagues and other departments paperlessly, giving you the option to anonymize the patient automatically.



The **email forwarding feature** allows you to send an email to your contacts with a single click.



With the possibility to organize patients in **groups**, you can efficiently filter and manage access rights to specific sets of patients.

This collaborative working philosophy is based on the support of the DICOM standard within HEIDELBERG EYE EXPLORER, which also includes DICOM file-sharing functionalities.

Security Improves Compliance

One-time set up of **role-based access** strengthens adherence to regulatory requirements. Establishing roles and responsibilities combined with the auto logout feature and controlled server access will help you meet stringent data protection regulations. **Optional active directory synchronization** makes login maintenance and data security compliance fast and easy.

HEYEX 2 ensures a high level of data integrity thanks to an **integrated duplicate check**. **Automatic archiving** provides added security for patient data and images. HEYEX 2 also allows you to store directly to a VNA (vendor neutral archive).

Upgradeability Protects Your Investment

HEYEX 2 provides the perfect foundation for growth and continuity of patient data. It immediately gives you convenient and efficient access to the range of multimodal diagnostic images from all your Heidelberg Engineering devices.

In the future, it opens the door to further upgrade possibilities such as integrating third-party devices with HEYEX PACS.

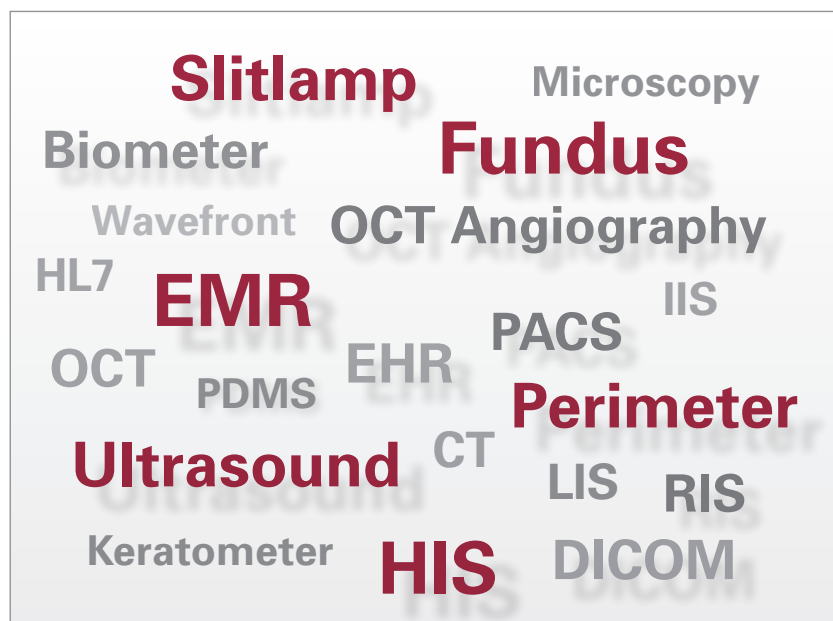
HEIDELBERG EYE EXPLORER – Upgrade

HEYEX PACS

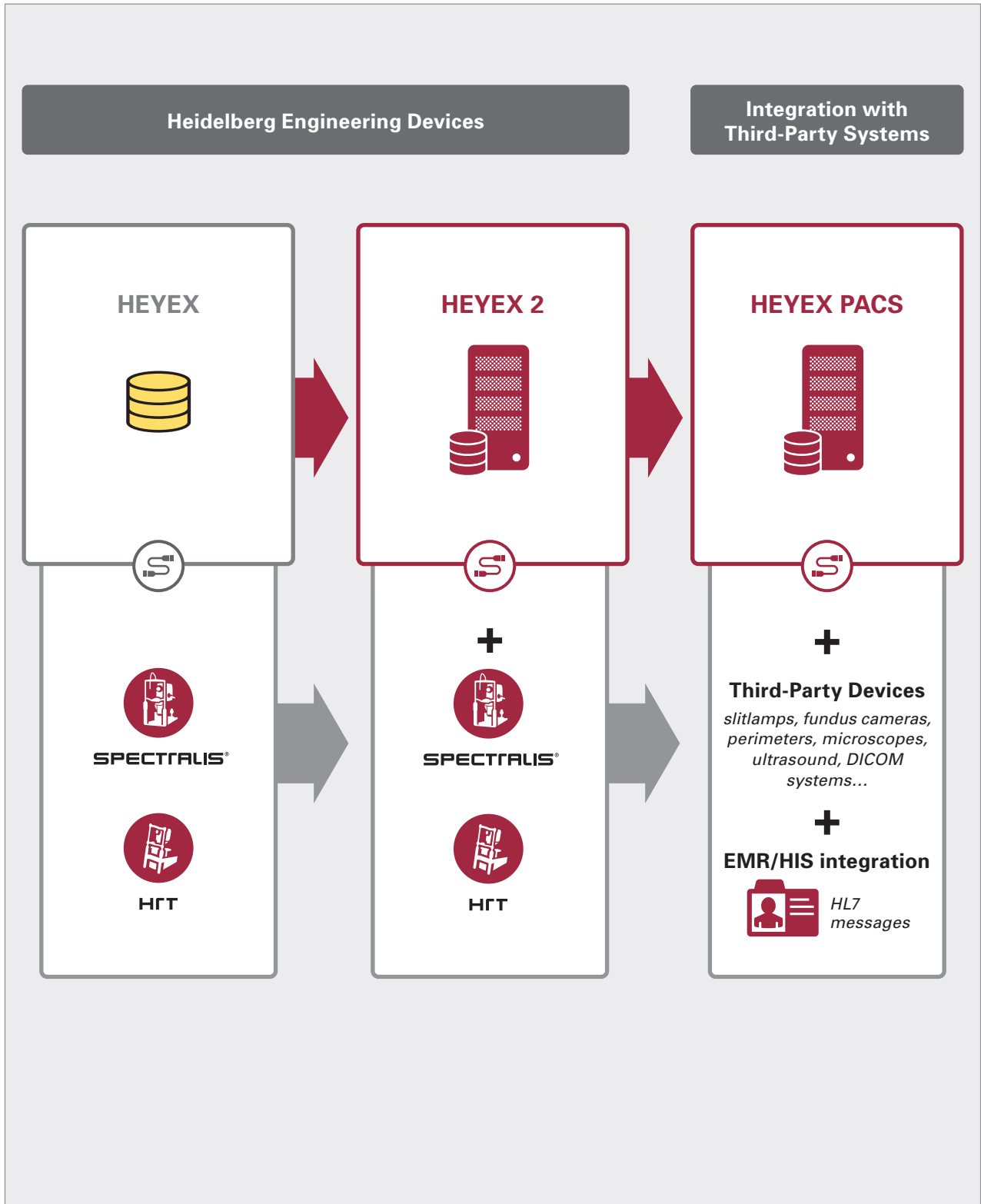
HEYEX PACS is the module of HEIDELBERG EYE EXPLORER offering you **full integration** of the Heidelberg Engineering ecosystem with **third-party information sources**.

Streamline your workflow management by eliminating duplicated data entry and improving compliance.

Connect all relevant ophthalmic devices to HEYEX PACS and transform data into clinical intelligence that supports your decision making.



Upgrade Pathway





Headquarters

Heidelberg Engineering GmbH · Max-Jarecki-Str. 8 · 69115 Heidelberg · Germany
Tel. +49 6221 64630 · Fax +49 6221 646362

USA

Heidelberg Engineering, Inc. · 10 Forge Parkway · Franklin, MA 02038
Tel. +1 508 530 7900 · Fax +1 508 530 7901

www.HeidelbergEngineering.com